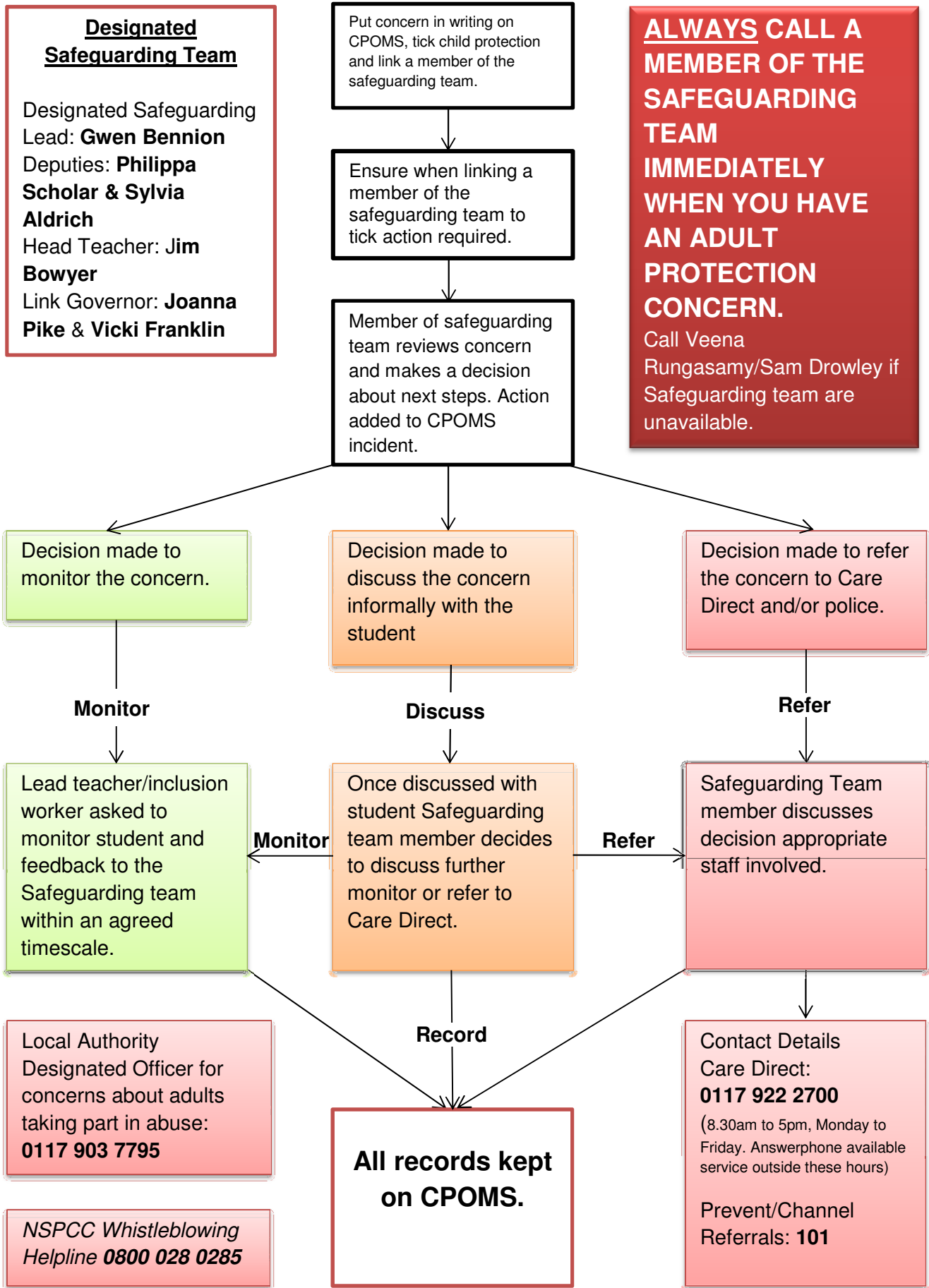


FLOWCHART FOR RAISING SAFEGUARDING CONCERNS ABOUT A STUDENT OVER 18 YEARS OLD



Local Authority Designated Officer for concerns about adults taking part in abuse: 0117 903 7795

NSPCC Whistleblowing Helpline 0800 028 0285

Contact Details Care Direct: 0117 922 2700 (8.30am to 5pm, Monday to Friday. Answerphone available service outside these hours)

Prevent/Channel Referrals: 101

FLOWCHART FOR RAISING SAFEGUARDING CONCERNS ABOUT A STUDENT OVER 18 YEARS OLD



Report an adult safeguarding concern

If you have immediate concerns about your own or someone else's safety, call the Police on 999. If it isn't an emergency but you need help fast, call the Police on 101.

If you suspect that an adult in Bristol with care and support needs is being abused or neglected but their health or welfare is not in immediate danger, contact Care Direct at www.bristol.gov.uk/social-care-health/report-suspected-abuse. You will be directed to different forms depending on whether you are a member of the public or a professional.

You can also call Care Direct on 0117 922 2700, 8.30am to 5pm, Monday to Friday. There's an answerphone service outside these hours.

If you have concerns about a care service or provider, visit the Care Quality Commission at www.cqc.org.uk.

Bristol is committed to being a 'Safe City', and have [leaflets available](#) with more information